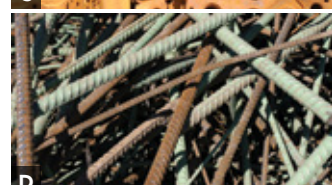
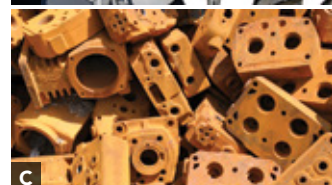


METALS WE BUY AND SELL

Ferrous Metals



OmniSource purchases metals, such as those shown at left, to be processed for sale. Processing at our facilities includes shredding, compacting, baling, shearing, and bundling—yielding various types and grades of ferrous scrap (at right). Most recycled steel is sold to steel mills and foundries.

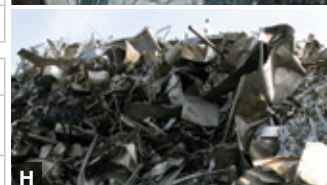


◀ PRODUCTS WE BUY

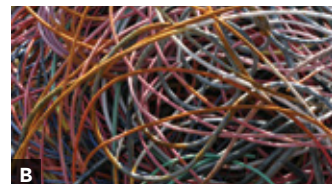
- A Crushed automobiles
- B Industrial scrap
- C Clean cast parts
- D Rebar scrap

PRODUCTS WE SELL ▶

- E #2 shredded (pile and detail)
- F #1 bundles
- G Plate and structural
- H #1 busheling
- I Turnings
- J Heavy melt
- K Briquettes



Nonferrous Metals



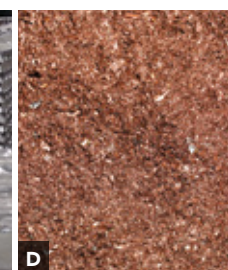
◀ PRODUCTS WE BUY

- A Aluminum cans
- B Copper wire

PRODUCTS WE SELL ▶

- C Secondary aluminum ingots
- D Copper granules
- E Stainless steel bundles

We buy nonferrous scrap as well as recover nonferrous metals from our shredding operations. We also operate facilities converting nonferrous scrap into forms useful to industry, such as secondary aluminum alloys and copper, bronze, and stainless steel in a variety of forms.



The above photos are representative of the wide variety of recycled metals that OmniSource buys and sells.



STRAIGHT TO THE SOURCE

OmniSource is a multifaceted metals-recycling company—one of North America’s largest processors and distributors of scrap and secondary metals. We collect, process, and resell a wide variety of scrap metal. Through recent expansions and acquisitions, we can now process 7 million tons of ferrous scrap per year and more than 1 billion pounds of nonferrous metals. We currently operate more than 70 collection and processing facilities, including 11 high-capacity shredders as well as other metals processing facilities, and employ about 2,500 people.

Our primary collection and processing facilities are in the Midwest, the Southeast, and the mid-Atlantic regions of the United States. Moreover, utilizing a wide-ranging fleet of trucks and containers, railcars, and barges to collect and haul metals, our reach stretches

across North America. Our national brokerage and trading operations serve both metals buyers and sellers, providing the market intelligence and insights needed to optimize transaction value.

Supplementing our company-operated scrap-collection sites, we also acquire metals from industrial scrap generators with which we have established strategic partnerships. We have designed and installed customized metals-recycling programs, some of which we manage and operate, for manufacturing companies nationwide.

Founded in Fort Wayne, Indiana, more than 65 years ago, OmniSource was acquired in 2007 by Steel Dynamics, Inc., and operates as a wholly owned subsidiary.

DOING BUSINESS WITH OMNISOURCE

This brochure shows the locations of our scrap-collection sites, processing facilities, and regional trading offices. It also provides examples of the types of scrap metals that we buy and the recycled materials that we sell. Please go to our Web site to find additional detailed information.

CONTACT US—Whether you’re selling scrap metals or buying recycled materials, or you just want to find out more about metals recycling, please contact us. Our full-service commercial and logistics teams stand ready to serve you.



OmniSource Midwest

INDIANA

- Auburn
- Bourbon
- Elkhart
- Fort Wayne
- Goshen
- Indianapolis
- Jeffersonville
- Kokomo
- Marion
- Muncie
- New Haven
- South Bend

ILLINOIS

- Belvidere
- Normal

MICHIGAN

- Adrian
- Bay City
- Coldwater
- Ecorse
- Howell
- Jackson
- Jonesville
- Sterling Heights
- Sturgis
- Three Rivers
- Warren

OHIO

- Defiance
- Lima
- Mansfield
- St. Marys
- Toledo

	Collection Yard	Ferrous Processing	Nonferrous Processing	Scrap Mgmt. Facility
Auburn	•			
Bourbon	•	•		
Elkhart	•			
Fort Wayne	•	•	•	
Goshen	•			
Indianapolis	•	•	•	
Jeffersonville	•	•		
Kokomo	•			
Marion	•			
Muncie	•			
New Haven			•	
South Bend	•	•		
Belvidere				•
Normal				•
Adrian	•			
Bay City	•	•		
Coldwater	•			
Ecorse		•		
Howell				•
Jackson	•	•		
Jonesville	•			
Sterling Heights				•
Sturgis	•			
Three Rivers	•			
Warren				•
Defiance	•	•		
Lima	•	•	•	
Mansfield	•	•	•	
St. Marys	•	•	•	
Toledo	•	•	•	

OmniSource Southeast

GEORGIA

- Athens

NORTH CAROLINA

- Charlotte
- Fayetteville
- Kernersville
- Lumberton
- Raeford
- Smithfield
- Wilmington
- Winston-Salem

SOUTH CAROLINA

- Anderson
- Berea
- Columbia
- Spartanburg
- Wellford

TENNESSEE

- Johnson City
- Moorsburg
- Mountain City

VIRGINIA

- Montvale
- Rocky Mount

	Collection Yard	Ferrous Processing	Nonferrous Processing	Scrap Mgmt. Facility
Athens	•	•	•	
Charlotte	•	•	•	
Fayetteville	•	•	•	
Kernersville	•	•	•	
Lumberton	•	•	•	
Raeford	•			
Smithfield	•	•	•	
Wilmington	•	•		
Winston-Salem	•	•	•	
Anderson	•			
Berea	•			
Columbia	•	•	•	
Spartanburg	•	•	•	
Wellford		•	•	
Johnson City	•	•	•	
Moorsburg	•			
Mountain City	•			
Montvale	•	•		
Rocky Mount	•	•		

Regional Trading Offices

- Chicago
- St. Louis
- Atlanta
- Toronto
- Northern Indiana
- Northern Ohio
- Mid-Ohio